

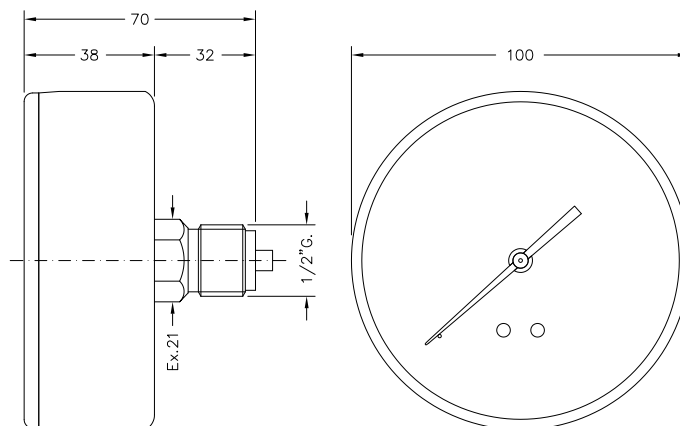
## BOURDONSKI MANOMETAR, RADIJALNI PRIKLJUČAK

standardne verzije, DN 100

## BOURDON SPRING PRESSURE GAUGES, REAR CONNECTION

standard version, DN 100

**M 100 PM**



### > PRIMJENA

Pogodni su za mjerenje tlaka tekućina ili plinova, pod uvjetom da potonji nisu visoke viskoznosti, kristalizirajući ili korozivni za bakar i legure kositra.

### > GRANE PRIMJENE

- vodovodna oprema i sustavi
- sustavi za grijanje
- pneumatika i hidraulika
- industrijska automatizacija
- industrijska i tehnička oprema

### > APPLICATIONS

They are suitable for measuring the pressure of liquid or gaseous fluids, provided the latter are not highly viscous, crystallising or corrosive to copper and tin alloys.

### > MAIN FIELDS OF APPLICATION

- plumbing equipment and systems
- heating systems
- pneumatics and hydraulics
- industrial automation
- industrial items and technical equipment

### > NORMATTIVI

- EN 837-1  
Klasa preciznosti 2,5
- direktiva CE 1997-23(PED)
- stupanj zaštite IP31 prema EN 60529

### > NORMATIVE REFERENCES

- EN 837-1  
2.5 precision class
- CE 1997-23 directive (PED)
- degree of protection IP31 according to EN 60529

### > RADNA OPTEREĆENJA

#### Temperatura

Na manometru  $-40 \div +70$  °C  
Medij max 70 °C

#### Tlak

Do 3/4 cijele mjerne skale za statički tlak  
Do 2/3 cijele mjerne skale za fluktuirajući tlak  
Do cijele mjerne skale za kratke intervale

#### Fluidi

Tekućine ili plinovi koji nisu korozivni za legure bakra, niske viskoznosti i ne kristalizirajući  
Manometri nisu pogodni za kisik

### > OPERATING LIMITS

#### Temperatures

On the body of the pressure gauge  $-40 \div +70$  °C  
Of pressurized fluid max 70 °C

#### Pressure

Up to 3/4 of the full scale value for static pressures  
Up to 2/3 of the full scale value for fluctuating pressure  
Up to the full scale value for short periods

#### Fluids

Liquid or gaseous non-corrosive to copper alloys, not highly viscous, not crystallising  
Gauges not suitable for oxygen

**> KONSTRUKCIJSKE KARAKTERISTIKE**

- kućište crno obojani čelik
- prozor metakrilat
- dvostruka mjerna skala: bar (crna boja), psi (crvena boja)
- aluminijska kazaljka
- mesing priključak
- Bourdonova cijev oblika "C" bakrene legure za mjerna područja do 40 bar, spiralne cijevi iz fosforne bronce za više tlakove
- težina 310g

**> CONSTRUCTION FEATURES**

- painted steel black case
- crystal clear methacrylate window
- prepainted aluminium white dial
- two-colour graphics, double scale: bar (black) psi (red)
- aluminium indicator
- brass coupling
- "C" shaped Bourdon spring in copper alloy for full scale pressures up to 40 bar, spiral spring in phosphorous bronze for higher pressures
- movement in watch brass alloy (OT59)
- weight 310 g

**> MODELI I CIJENE**

**M 100 PM**

ŠIFRA	M.P./SCALE	€
914 190 13	-1 bar/kpa	20,80
914 190 14	1 bar/psi	20,80
914 190 15	1,6 bar/psi	20,60
914 191 11	2,5 bar/psi	18,60
914 192 11	4 bar/psi	18,60
914 193 11	6 bar/psi	18,60
914 194 11	10 bar/psi	18,60
914 195 11	16 bar/psi	18,60
914 196 11	25 bar/psi	18,60
914 197 11	40 bar/psi	18,60
914 198 00	60 bar/psi	20,20
914 198 10	100 bar/psi	20,20
914 198 20	160 bar/psi	20,20
914 198 30	250 bar/psi	20,20
914 198 40	400 bar/psi	20,20
914 198 50	600 bar/psi	20,20