

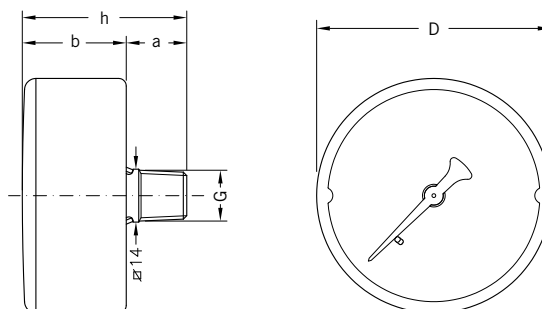
## BOURDONSKI MANOMETAR, AKSIJALNI PRIKLJUČAK

standardne verzije, DN 40–50–63

## BOURDON SPRING PRESSURE GAUGES, REAR CONNECTION

standard version DN 40–50–63

**M -- PP**



### > DIMENZIJE I TEŽINA/ SIZES AND WEIGHTS

ŠIFRA	D	G	a	b	h	TEŽINA/WEIGHT
<b>M 40 PP</b>	40 mm	R1/8"	16 mm	27 mm	43 mm	58 gr
<b>M 50 PP 1/8"</b>	50 mm	R1/8"	16 mm	28 mm	44 mm	64 gr
<b>M 50 PP 1/4"</b>	50 mm	R1/4"	16 mm	28 mm	44 mm	67 gr
<b>M 63 PP</b>	63 mm	R1/4"	16 mm	28 mm	44 mm	76 gr

#### > PRIMJENA

Pogodni su za mjerenje tlaka tekućina ili plinova, pod uvjetom da potonji nisu visoke viskoznosti, kristalizirajući ili korozivni za bakar i legure kositra.

#### > GRANE PRIMJENE

- vodovodna oprema i sustavi
- sustavizagrijanje
- pneumatika i hidraulika
- industrijska automatizacija
- industrijska i tehnička oprema

#### > APPLICATIONS

They are suitable for measuring the pressure of liquid or gaseous fluids, provided the latter are not highly viscous, crystallising or corrosive to copper and tin alloys.

#### > MAIN FIELDS OF APPLICATION

- plumbing equipment and systems
- heating systems
- pneumatics and hydraulics
- industrial automation
- industrial items and technical equipment

#### > NORMATIVI

- EN 837-1  
klasapreciznosti 2,5
- direktiva CE 1997-23 (PED)
- stupanj zaštite IP31 prema EN 60529

#### > NORMATIVE REFERENCES

- EN 837-1  
2.5 precision class
- CE 1997-23 directive (PED)
- degree of protection IP31 according to EN 60529

#### > RADNA OPTEREĆENJA

##### Temperatura

Na manometru -40 ÷ +70 °C  
Medij max 70 °C

##### Tlak

Do 3/4 cijele mjerne skale za statički tlak  
Do 2/3 cijele mjerne skale za fluktuirajući tlak  
Do cijele mjerne skale za kratke intervale

##### Fluidi

Tekućine ili plinovi koji nisu korozivni za legure bakra, niske viskoznosti i ne kristalizirajući  
Manometri nisu pogodni za kisik

#### > OPERATING LIMITS

##### Temperatures

On the body of the pressure gauge -40 ÷ +70 °C  
Of pressurized fluid max 70 °C

##### Pressure

Up to 3/4 of the full scale value for static pressures  
Up to 2/3 of the full scale value for fluctuating pressure  
Up to the full scale value for short periods

##### Fluids

Liquid or gaseous non-corrosive to copper alloys, not highly viscous, not crystallising  
Gauges not suitable for oxygen

> **KONSTRUKCIJSKE KARAKTERISTIKE**

- kućište ABS
- prozor kristalni polistiren
- dvostruka mjerna skala: bar (crna boja), psi (crvena boja)
- mesing priključak
- Bourdonova cijev oblika "C" bakrene legure

> **CONSTRUCTION FEATURES**

- shockproof ABS case
- window crystal polystyrene
- white dial in ABS
- two-colour graphics, double scale: bar (black) psi (red)
- black plastic indicator
- brass coupling
- "C" shaped Bourdon spring in copper alloy
- movement in watch brass alloy (OT59)

> **MODELI I CIJENE**

**M 40 PP**

ŠIFRA	M.P./SCALE	€
914 470 00	-1 bar/kpa	7,50
914 470 10	1 bar/psi	7,50
914 470 11	1,6 bar/psi	6,20
914 471 11	2,5 bar/psi	4,60
914 472 11	4 bar/psi	4,30
914 473 11	6 bar/psi	4,30
914 474 11	10 bar/psi	4,30
914 474 21	12 bar/psi	4,30
914 475 11	16 bar/psi	4,30
914 476 11	20 bar/psi	4,60

**M 50 PP 1/8"**

ŠIFRA	M.P./SCALE	€
914 592 22	4 bar/psi	4,50
914 593 12	6 bar/psi	4,50
914 594 12	10 bar/psi	4,50
914 594 22	12 bar/psi	4,50
914 595 12	16 bar/psi	4,50

**M 50 PP 1/4"**

ŠIFRA	M.P./SCALE	€
914 590 01	-1 bar/kpa	7,50
914 590 10	1 bar/psi	7,50
914 590 11	1,6 bar/psi	5,70
914 591 11	2,5 bar/psi	4,70
914 592 11	4 bar/psi	4,50
914 593 11	6 bar/psi	4,50
914 594 11	10 bar/psi	4,50
914 594 21	12 bar/psi	4,50
914 595 11	16 bar/psi	4,50
914 596 11	20 bar/psi	4,70
914 596 12	25 bar/psi	4,70

**M 63 PP**

ŠIFRA	M.P./SCALE	€
914 690 13	-1 bar/kpa	7,60
914 690 14	1 bar/psi	7,60
914 690 15	1,6 bar/psi	5,90
914 691 11	2,5 bar/psi	4,90
914 692 11	4 bar/psi	4,70
914 693 11	6 bar/psi	4,70
914 694 11	10 bar/psi	4,70
914 694 21	12 bar/psi	4,70
914 695 11	16 bar/psi	4,70
914 696 10	20 bar/psi	4,90
914 696 11	25 bar/psi	4,90
914 697 11	40 bar/psi	5,20