

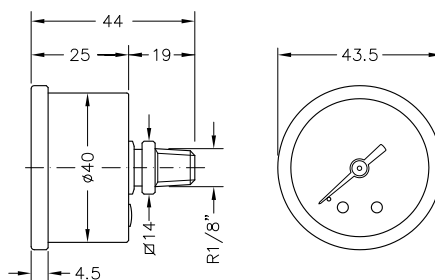
BOURDONSKI MANOMETAR, AKSIJALNI PRIKLJUČAK, INOX KUĆIŠTE

nepunjen, za instrumentne panele, DN 40

BOURDON SPRING PRESSURE GAUGES, REAR CONNECTION, STAINLESS STEEL CASE

dry version, for instrument panel, DN 40

M 40 PA



> PRIMJENA

Manometri čvrste konstrukcije, iznimno su pogodni za montiranje na instrumentne panele ili pogonske strojeve, za mjerenje tekućina i plinova, pod uvjetom da potonji nisu visoko viskozni, kristalizirajući ili korozivni za bakar i legure kositra.

Mogu se pričvrstiti direktno na izvor tlaka ili na panel pomoću posebnih sedla i prirubnica.

> GRANE PRIMJENE

- tehnička oprema
- hidraulika i pneumatika
- kompresori

> NORMATIVI

- EN 837-1
klasa preciznosti 2,5
- direktiva CE 1997-23(PED)
- stupanj zaštite IP65 prema EN 60529

> RADNA OPTEREĆENJA

Temperatura

Na manometru -40 ÷ +70 °C
Medij max 70 °C

Tlak

Do 3/4 cijele mjerne skale za statički tlak
Do 2/3 cijele mjerne skale za fluktuirajući tlak
Do cijele mjerne skale za kratke intervale

Fluidi

Tekućine ili plinovi koji nisu korozivni za legure bakra, niske viskoznosti i ne kristalizirajući
Manometri nisu pogodni za kisik

> APPLICATIONS

Sturdy-built pressure gauges, especially suitable for mounting on the instrument panel of machines, for the measurement of liquid and gaseous fluids, provided they are not highly viscous, crystallizing or corrosive to copper and tin alloys.

They can be fastened directly on the pressure inlet or the instrument panel with special brackets or flanges supplied as optional (see pag. 48/49).

> MAIN FIELDS OF APPLICATION

- technical equipment
- oil hydraulics and pneumatics
- compressors

> NORMATIVE REFERENCES

- EN 837-1
2.5 precision class
- CE 1997-23 directive (PED)
- degree of protection IP65 according to EN 60529

> OPERATING LIMITS

Temperatures

On the body of the pressure gauge -40 ÷ +70 °C
Of pressurized fluid max 70 °C

Pressure

Up to 3/4 of the full scale value for static pressures
Up to 2/3 of the full scale value for fluctuating pressure
Up to the full scale value for short periods

Fluids

Liquid or gaseous non-corrosive to copper alloys, not highly viscous, not crystallising
Gauges not suitable for oxygen

> KONSTRUKCIJSKE KARAKTERISTIKE

- kućište od poliranog nehrđajućeg čelika AISI 304
- zaporni prsten od poliranog nehrđajućeg čelika AISI 304
- nelomljivi polikarbonatni prozor
- bijeli aluminijski brojčanik
- dvostruka mjerna skala: bar (crna boja), psi (crvena boja)
- aluminijska kazaljka
- mesing priključak
- Bourdonova cijev oblika "C" bakrena legura
- težina 78 grama

> CONSTRUCTION FEATURES

- case in polished stainless steel AISI 304
- retaining ring in polished stainless steel AISI 304, cramped to the case
- unbreakable polycarbonate window
- prepainted aluminium white dial
- two-colour graphics: double scale bar (black) psi (red)
- aluminium indicator
- brass coupling
- "C" shaped Bourdon spring in copper alloy
- high sensitivity movement in watch brass alloy (OT59)
- weight 78 gr

> MODELI I CIJENE

M 40 PA

ŠIFRA	M.P./SCALE	€
914 460 00	-1 bar/kpa	10,80
914 460 10	1 bar/psi	10,80
914 460 11	1,6 bar/psi	9,20
914 461 11	2,5 bar/psi	8,00
914 462 11	4 bar/psi	8,00
914 463 11	6 bar/psi	8,00
914 464 11	10 bar/psi	8,00
914 464 21	12 bar/psi	8,00
914 465 11	16 bar/psi	8,00
914 466 11	20 bar/psi	8,00