

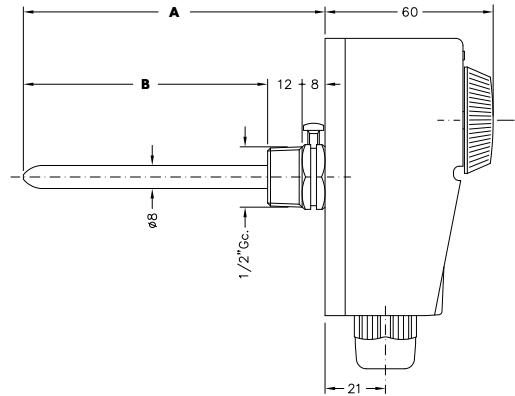
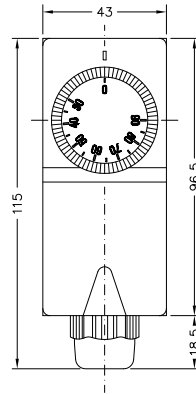
TERMOSTAT ELEKTROMEHANIČKI , PLASTIČNO KUĆIŠTE

podesiva temperatura 30/+90°C, tekuća ekspanzija

ELECTROMECHANICAL IMMERSION THERMOSTAT IN PLASTIC CASE

adjustable temperature 30/90 °C, operation with liquid expansion

TURE



> DIMENZIJE I TEŽINA / SIZES AND WEIGHTS

MODELI	A	B	TEŽINA/WEIGHT
TURE 10	105 mm	85 mm	250 gr
TURE 20	205 mm	185 mm	260 gr

> POSEBNA OBILJEŽJA

Podesivi termostat TURE uglavnom se koristi na cjevovodima sustava grijanja za regulaciju grijača zraka, plamenika, pumpi i slično.

Radi na principu tekuće ekspanzije koja osigurava konstantnost i preciznost.

Osjetni mehanizam se direktno uranja u tekućinu pomoću stražnje sonde.

Pogodni su za:

- standardne i centralne sustave grijanja
- sustave podnog grijanja
- razne sustave koji zahtijevaju ON/OFF signal sa cjevovoda kada temperatura dosegne temperaturu između 20 i 90°C

> DISTINCTIVE FEATURES

The adjustable thermostat TURE is mainly used on heating systems for the regulation of air heaters, burners, pumps and the like.

The operating principle works with liquid expansion and this ensures consistency and accuracy of operation.

The temperature sensing element is directly inserted into the pocket immersed in the liquid. This contributes to the reliability of the response of the thermostat.

Suitable to:

- traditional heating systems and centralized
- floor heating systems
- many other applications when you need to receive an ON/OFF signal from the pipeline when it reaches a temperature of between 20 and 90 °C

> NORMATIVI

- ENEC odobrenje
- I.S.P.E.S.L. odobrenje
- CE deklaracija
- EN 60730
- BT 2006/95/CE
- EMC 2004/108/CE

> NORMATIVE REFERENCES

- ENEC approval
- I.S.P.E.S.L. approval
- CE conformity
- EN 60730
- BT 2006/95/CE
- EMC 2004/108/CE

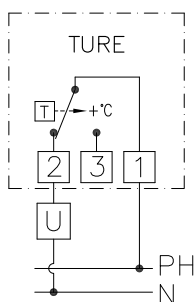
> TEHNIČKI PODACI

- kućište od termoplastičnog materijala
- sonda od bakrene legure
- termostatni element sa tekućom dilatacijom
- kabel M20
- mjerno područje 30/+90°C
- temperaturni gradijent < 1K/m'
- sklopke (SPDT)
- kontakti kapacitet 16A (2.5A)/250 Vac
- izolacija klase I
- maksimalna temperatura na kućištu 80°C
- maksimalna temperatura na kontaktnoj ploči 125°C
- maksimalan pritisak na sondu 10 bara
- stupanj zaštite IP40 prema EN60529
- diferencija (Δt) 5/+10°C

> TECHNICAL DATA

- exterior in shockproof thermoplastic material
- copper alloy pocket
- thermostat element with liquid dilatation
- cable gland M20
- setting range 30 ÷ 90 °C
- temperature gradient < 1 K/m'
- switching contacts (SPDT)
- contact capacity 16A (2.5A)/250 Vac
- insulation class I
- maximum body temperature 80 °C
- maximum temperature on pocket 125 °C
- maximum pressure on pocket 10 bar
- degree of protection IP40 according to EN 60529
- differential (Δt) 5 ÷ 10 °C

> SCHEMA SPAJANJA / WIRING DIAGRAM



> MODELI I CIJENE

ŠIFRA	MODELI	€
919 340 20	TURE 10	24,00
919 340 21	TURE 20	25,40